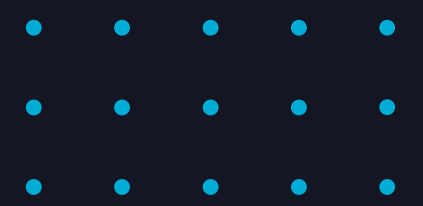


ASZ Electronics Solutions

Your reliable CEM partner



About us

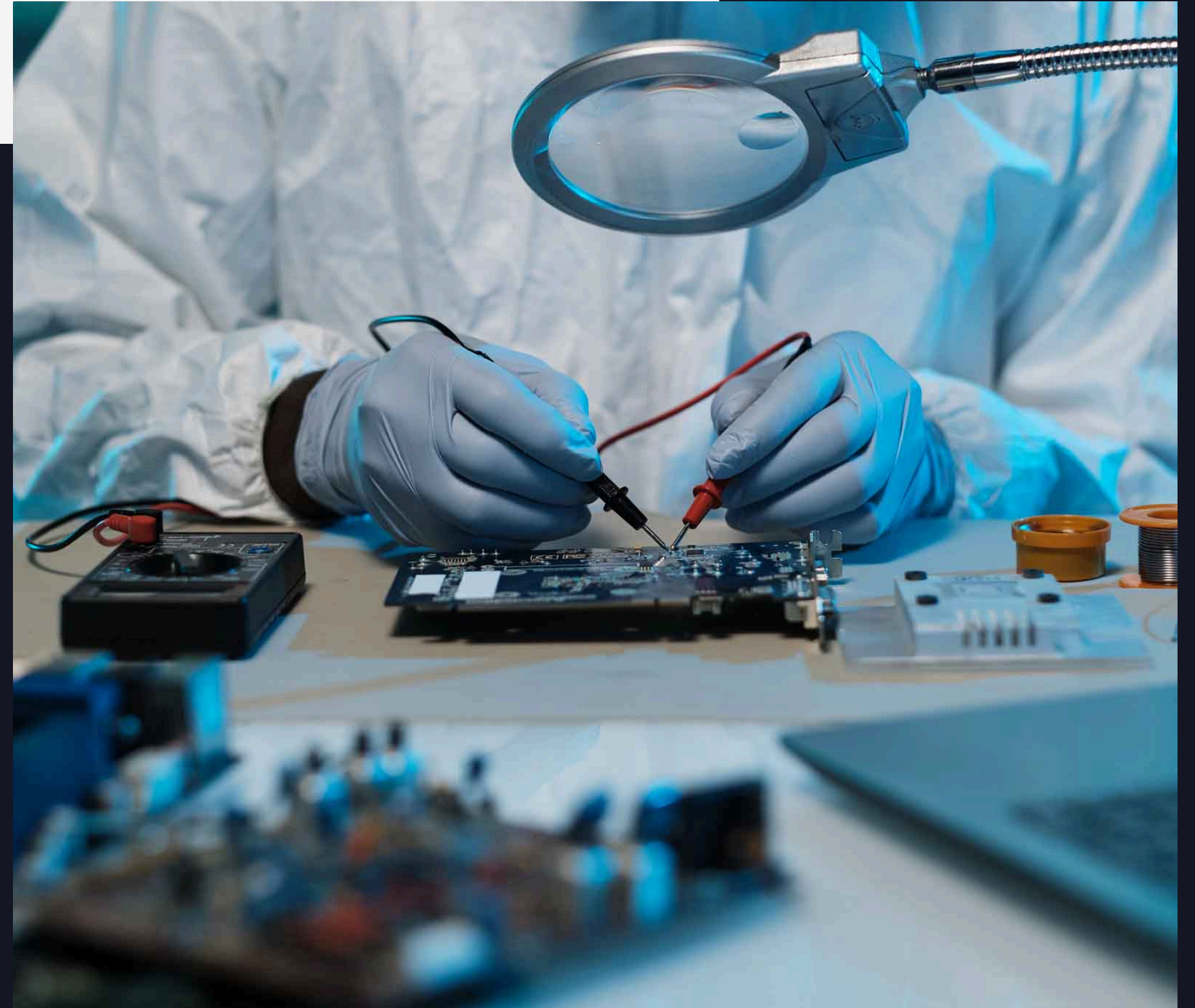


ASZ Electronics Solutions is a Polish contract electronics manufacturer.

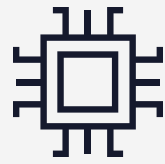
We provide SMT and THT assembly as well as full device integration, supporting our clients from the design stage, through prototyping, to stable serial production. We focus on process reliability, transparent communication, and on-time project delivery.

With our team's extensive experience and technical expertise, we help clients successfully bring their products to market.

- **Location:** Wrocław, Poland
- **Established:** 2020 – 20 years of EMS industry experience
- **Team:** 35 employees



What we offer



SMT and THT assembly

We provide SMT and THT assembly services tailored to project requirements.



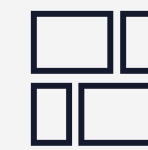
AOI 3D and X-RAY inspection

For the highest quality, we carry out automatic optical inspection in 3D and X-RAY



Conformal coating and potting

We offer automatic and repeatable varnishing and resin coating services



Box building

Based on client requirements, we perform a wide range of final tests and unit assembly



Wire harness assembly

Our portfolio includes the service of finishing and preparing electrical harnesses



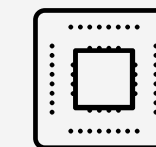
Testing and programming

We provide testing and programming services for assembled boards



Building testers

We produce dedicated devices for testing and programming finished products and assemblies.



Electronics design

We implement projects from concept through PCB to testing and production

How we work



Documentation Review & Component Procurement

- Verification of technical documentation, BOM, and quality requirements
- Assessment of component availability and supply chain risks

Packaging & Delivery

- Product labeling, kitting, and shipping documentation preparation
- ESD-safe packaging of finished modules
- Timely delivery to customers



Production Preparation

- Production process preparation
- Preparation of materials, tooling, and manufacturing documentation
- Production planning and scheduling

Assembly, Inspection & Testing

- SMT and THT assembly as well as final device integration
- Visual and optical inspection, and testing in accordance with project requirements and IPC assembly class
- Full traceability of production batches

Each stage is carried out according to an established process and in continuous communication with the client.

Quality & Control



Quality Management & Production Supervision

- ESD-compliant production facility
- Assembly in accordance with IPC-A-610J (Classes 1-3)
- ISO 9001:2015 certified
- Regular internal and external training for machine operators and quality inspectors
- Scheduled technical maintenance and equipment calibration



Inspection & Equipment

- 3D AOI and X-ray inspection
- Inspection stations equipped with microscopes and rework stations integrated with the 3D AOI system

Production Equipment

SMT

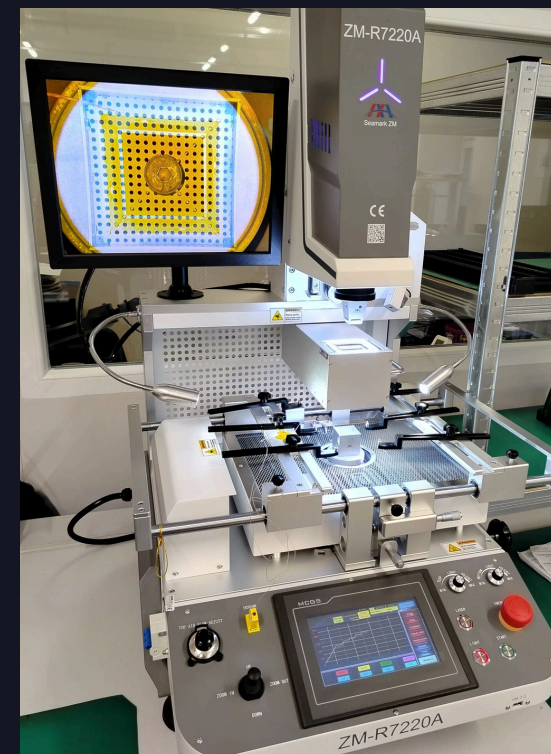
- 3 SMT assembly lines:
- Screen printer: Ekra X3
- Yamaha I-Pulse S20
- Reflow oven: Heller 1809 MK5

THT

- 14 manual soldering workstations
- Selective soldering system: Inertec Cube.460
- Resin potting station
- Manual conformal coating station
- Cable assembly workstation

Additional Equipment

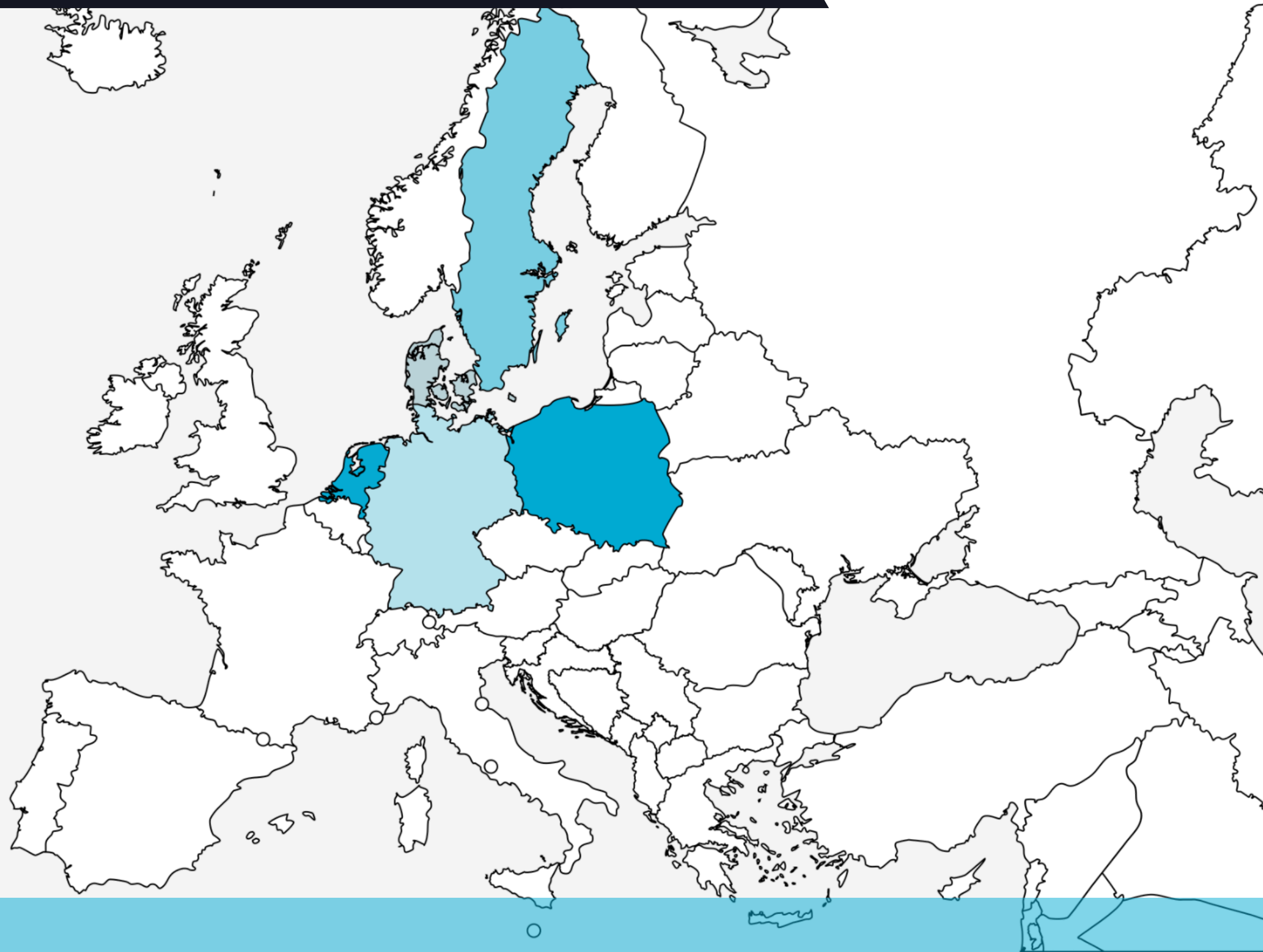
- 3D AOI system: Saki 3Di LS2
- X-ray inspection system: X-eye 5100F
- BGA rework station: Seamark ZM-R7220A
- Controlled humidity storage for moisture sensitive components
- X-ray component counting system
- Spray and ultrasonic cleaning equipment



Markets We Serve



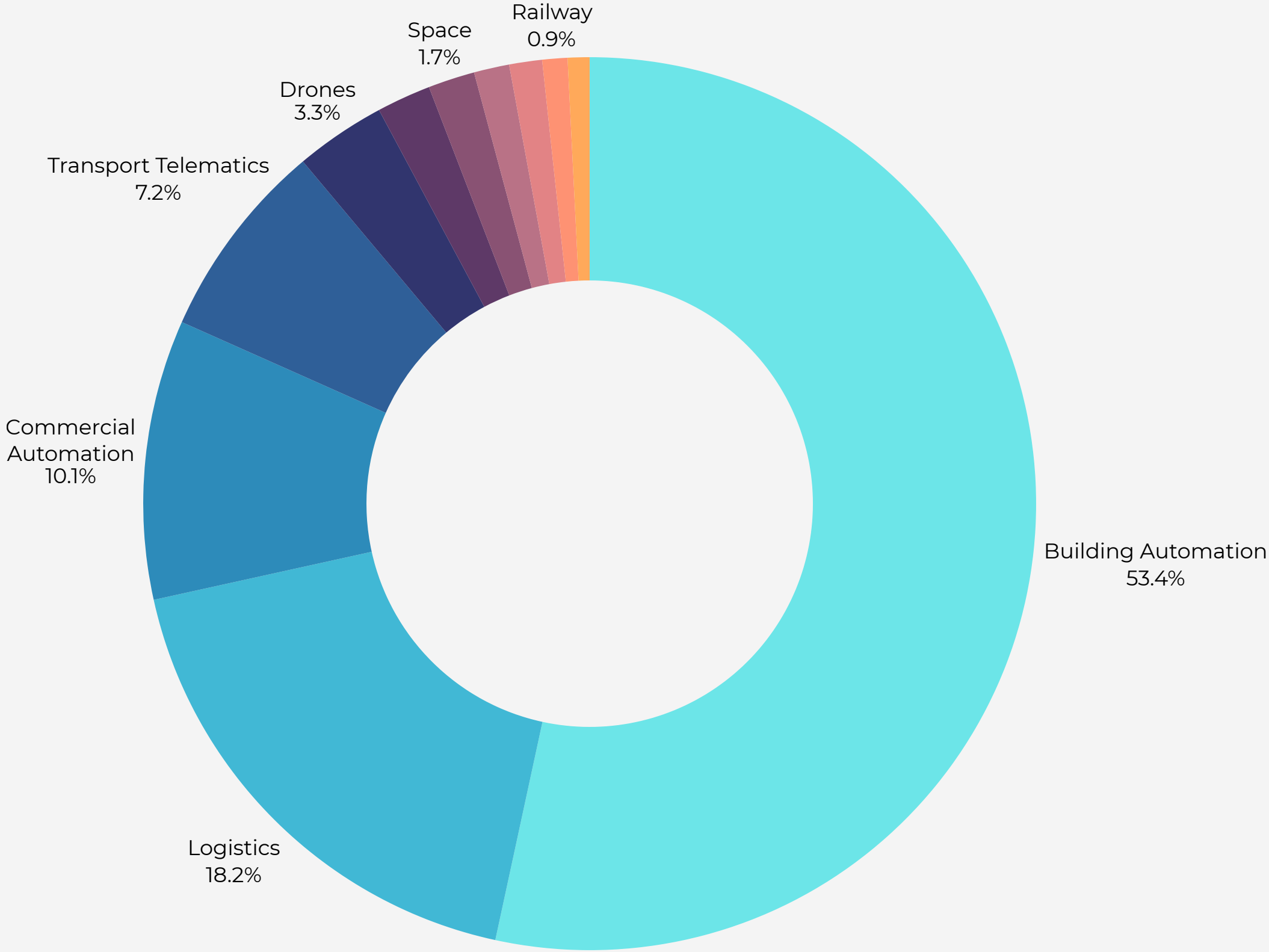
Country	% of Total Revenue
Poland	47.6
Netherlands	45.6
Sweden	3.5
Germany	2.2
Denmark	1.1



Market Segments



Industry	% of Total Revenue
Building Automation	53.4
Logistics	18.2
Commercial Automation	10.1
Transport Telematics	7.2
Drones	3.3
Lighting	1.9
Space	1.7
Industrial Automation	1.3
Agriculture	1.2
Railway	0.9
Mining	0.8



Contact Us



+48 796 002 236



info@aszes.com.pl



<https://aszes.com.pl/>



Stargardzka 9A, 54-156 Wrocław
Poland

